

Final Draft

Town of Warner New Hampshire



Much of the data utilized here represents stock data sets obtained from the NH GRANIT database as maintained by the Complex Systems Research Center (CSRC) at the University of New Hampshire (UNH). The New Hampshire Geographically Referenced Analysis and Information Transfer System (NH GRANIT) is a cooperative project to create, maintain, and make available a statewide geographic data base serving the information needs of state, regional, and local decision-makers.

Wildlife Habitat Co-Occurrence

Legend

Warner

Neighboring Towns

Conservation Lands

Contours

20' Contour

100' Contour

Roads

Interstate

State

Local

Class 5

Class 5 Seasonal

Class 6

Hydrography

Watershed Boundaries

wetlands

River

Lake/Pond/Reservoir

Perennial Stream

Intermittent Stream

Wildlife Habitat Co-Occurrence

Wildlife Habitat Co-Occurrence Legend

WAP Conservation Focus Areas

Warner Tax Parcels <10 Acres

0

delphicomp3

Value

High : 48

Low : 0

Wildlife Habitat Features Co-Occurrence Notes

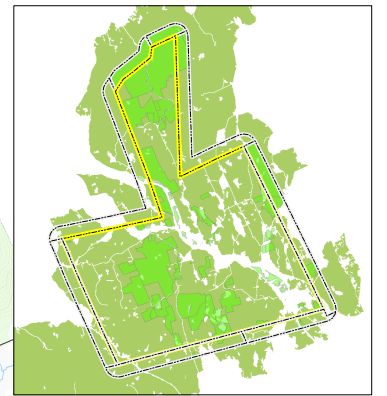
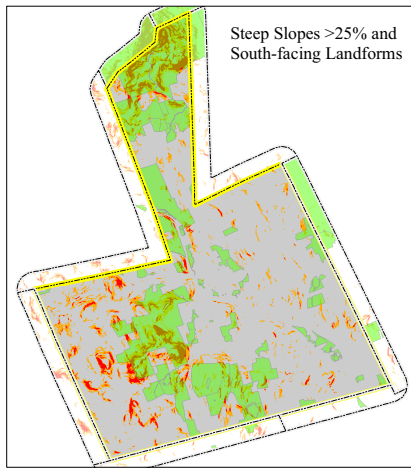
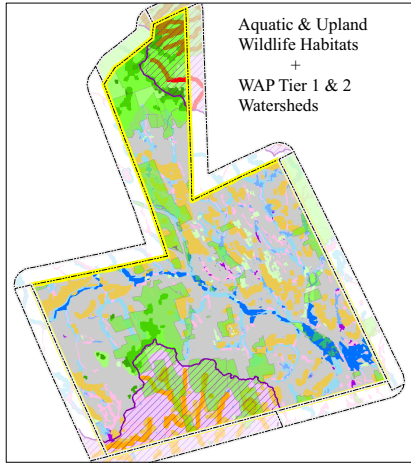
This map displays the coincidence of twelve (14) separate wildlife habitat features by overlaying all the data layers with an arbitrary value of one (1) point for each layer. The maximum number of features overlapping in this model is eight (8), with the higher number of co-occurrence reflected in the darker colors. Thus, this map can be used as a general reference tool to locate areas of higher conservation values within the town.

The various data factors are shown in the inset maps to the left, and with more detail in a separate map titled: Wildlife Habitat Features.

The list of factors is as follows:

- Forest blocks >100 acres
- WAP* habitat features and land covers, including:
 - High Elevation Spruce/Fir Forest
 - Lowland Spruce/Fir Forest
 - Northern Hardwood/Conifer Forest
 - Appalachian Oak/Pine Forest
 - Floodplain Complexes >500 acres
 - Marsh Complexes >250 acres
 - Peatland Complexes >250 acres
- Other wetlands from NWI and hydric soils data
- Riparian & shoreland buffers (300 feet)
- WAP Tier 1 & 2 watersources
- WAP Tier 1 & 2 watersheds
- Steep slopes >25%
- South-facing slopes

*WAP = N.H. Wildlife Action Plan, N.H. Fish & Game Department, 2006



Forest Blocks > 100 acres



0 0.5 1 Mile

1:24,000 1 inch = 2,000 feet

D. Sundquist / 603-224-9945 / www.forestociety.org / 10-25-2008

Prepared by
The Society for the Protection of NH Forests
Research Department

